

Mounting a NFS-Share on Windows 7

Created with a trial version of ScreenSteps

Here I like to explain how I create and mount a NFS-Share on my Windows 7 box from my FreeNAS-Server.

Plz. compare this steps to yours, and lemme know where you have problems.

by:

Christian "bubulein" Degen

P.S.: Feel free to donate a few bucks to bubulein@freenas.org for a full version for my ScreenStep software.

My System Specs

System information	
Hostname	teufelchen.fantaranch.tld
Version	0.7.2 Sabanda (revision 6694)
Built on	Sun Jun 12 22:58:17 CEST 2011
OS Version	FreeBSD 7.3-RELEASE-p6 (revision 199506)
Platform	amd64-embedded on AMD Athlon(tm) II X2 250 Processor
System time	Thu Jun 30 22:35:52 CEST 2011
Uptime	4 day(s) 7 hour(s) 42 minute(s) 39 second(s)
Last config change	Wed Jun 29 0:38:40 CEST 2011
CPU temperature	33.5 °C 33.5 °C
CPU frequency	3000MHz
CPU usage	<div><div></div></div> 0%
Memory usage	<div><div></div></div> 57% of 3377MB
Swap usage	<div><div></div></div> 0% of 32GB Device: /dev/ad0 Total: 32G Used: 36K Free: 32G
Load averages	0.00, 0.00, 0.00 [Show process information]
Disk space usage	media <div><div></div></div> 89% of 2.7TB Total: 2.7T Used: 2.3T Free: 290G
	tank <div><div></div></div> 6% of 1.81TB Total: 1.81T Used: 147G Free: 1.64T State: ONLINE

[Zoom](#)

As you can see its the latest Stable - Thx Michael Zoon

Create NFS-Share

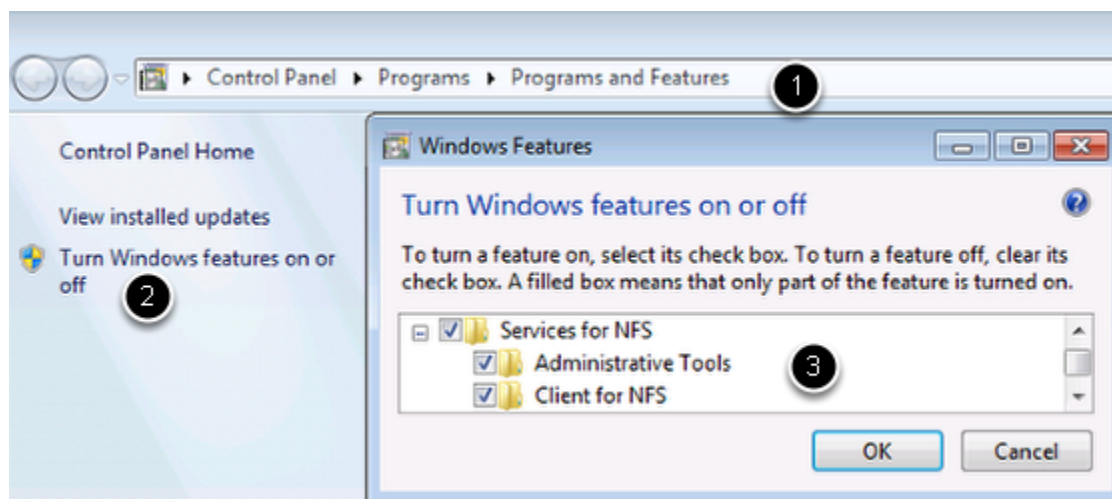
Services | NFS | Edit

Settings Shares	
Path	/mnt/media <small>Path to be shared. Please note that blanks in path names are not allowed.</small>
Map all users to root	Yes <small>All users will have the root privilege.</small>
Authorised network	192.168.1.0 / 24 <small>Network that is authorised to access the NFS share.</small>
Comment	Audio, Video and Pics
All dirs	<input checked="" type="checkbox"/> Share all sub directories.
Read only	<input type="checkbox"/> Specifies that the file system should be exported read-only.
Quiet	<input checked="" type="checkbox"/> Inhibit some of the syslog diagnostics for bad lines in /etc/exports.
<input type="button" value="Save"/> <input type="button" value="Cancel"/>	

[Zoom](#)

In this example i like to share my "media"-folder via NFS.

Enable "Services For NFS"



Go to:

1. "Control Panel\Programs\Programs and Features"
2. "Turn Windows Features on or off"
3. enable "Service For NFS" including "Adminstrative Tools" and "Client For NFS"

Command line options for NFS-Shares

```

Administrator: C:\Windows\system32\cmd.exe
Microsoft Windows [Version 6.1.7601]
Copyright (c) 2009 Microsoft Corporation. All rights reserved.

C:\Windows\system32>nfsadmin.exe client start

The service was started successfully.

C:\Windows\system32>showmount.exe -e 192.168.1.10
Exports list on 192.168.1.10:
/mnt/tank/fbsd          192.168.1.0
/mnt/media              192.168.1.0

C:\Windows\system32>mount 192.168.1.10:/mnt/media N:
N: is now successfully connected to 192.168.1.10:/mnt/media

The command completed successfully.

C:\Windows\system32>n:

N:\>dir
Volume in drive N has no label.
Volume Serial Number is 0000-0058

Directory of N:\

28.06.2011  18:31    <DIR>          .
28.06.2011  18:31    <DIR>          ..
26.06.2011  15:06    <DIR>          .snap
27.06.2011  00:21    <DIR>          audio
26.06.2011  15:43    <DIR>          games
26.06.2011  16:11    <DIR>          pics
26.06.2011  17:42    <DIR>          video
               0 File(s)              4.608 bytes
               7 Dir(s)  430.000.037.888 bytes free

N:\>

```

Open a cmd.exe as Administrator "**Start > Search programmes and files**" and enter "**cmd.exe**" hold CTRL+SHIFT and press enter.

The easiest solution to mount a NFS-Share is using the Command line.

Use:

- **nfsadmin.exe client start | stop**

To start or stop the client. If you encounter problems while mounting NFS-Shares a restart of this service doesn't hurt

- **showmount.exe -e 192.168.1.10**

List exported directories on the server

- **mount.exe 192.168.1.10:/mnt/media N:**

This will map the share to the drive letter N:, use * for auto select the drive letter.

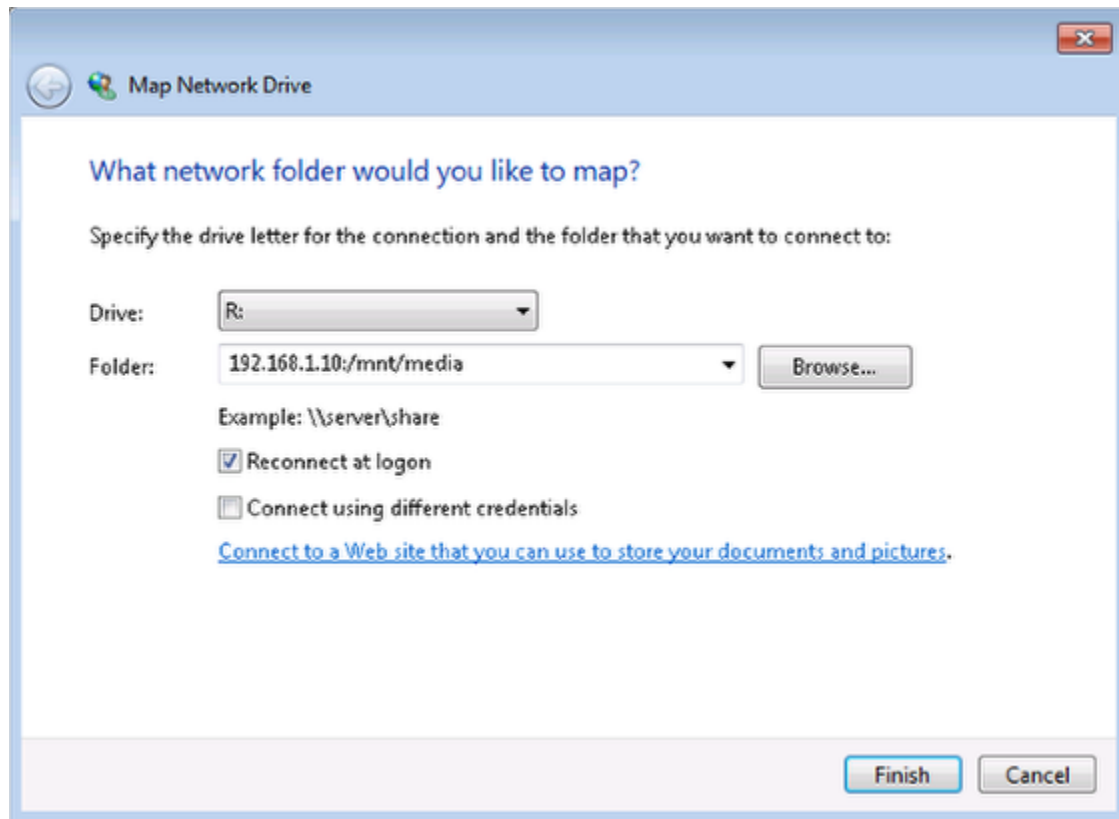
- **mount**

List mounted shares

- **umount N:**

Unmount/unmap drive N:

Map Network drive using Explorer



To map a NFS-Share using the Windows Explorer "right-click" on **Network** or **Computer** and select "**Map networkdrive**" and enter the address of your NFS-Share.